

TIP LEADING EDGE
1/4" SHEET

LEADING EDGE 1/8" x 1/4"

WING PLAN

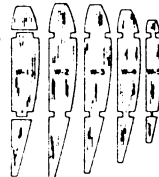
WING PLAN SHOWN WITHOUT DIHEDRAL. ASSEMBLE OUTER PANELS FROM W-1 TO TIP, EXCEPT RIB W-4 - THEN ELEVATE TIPS 1-3/4" AND COMPLETE CENTER SECTION.

TIP TRAILING EDGE
1/8" SHEET

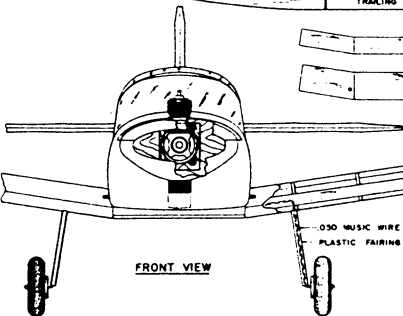
TRAILING EDGE 1/8" x 3/8"

SEW AND
GLUE WIRE
TO GUSSET
AND RIB

3/32" x 1/32"
FAIRING
BOTTOM
ONLY



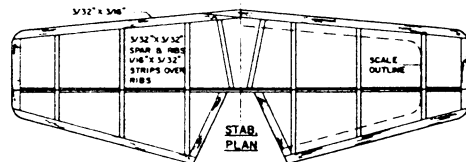
WING RIBS 1/8" SHEET, 2 EACH
REQUIRED EXCEPT W-2



FRONT VIEW



SPAR GUSSETS 1/8" Balsa
EXCEPT 1/8" PLYWOOD W-9



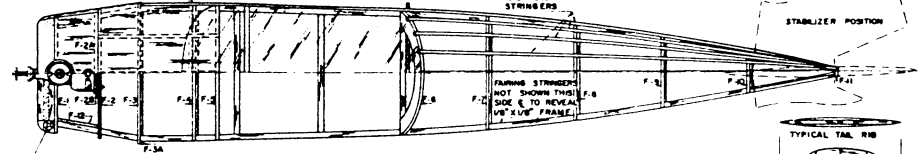
STAB
PLAN

DIHEDRAL 1-3/4"
(SCALE 1-5/8")

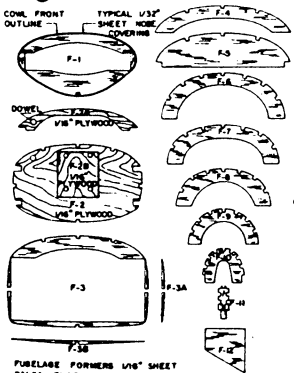
1/8" HARDWOOD DOWEL

1/8" x 1/8" STRINGERS

STABILIZER POSITION



FUSELAGE TOP VIEW



COWL FRONT
OUTLINE

TYPICAL 1/32"
SHEET NOSE
COVERING

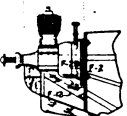
REMOVABLE COWL HELD
IN PLACE BY DRESS
SNAPS AND DOWEL

SHADED AREA OF
NOSE COVERED WITH
1/32" SHEET Balsa

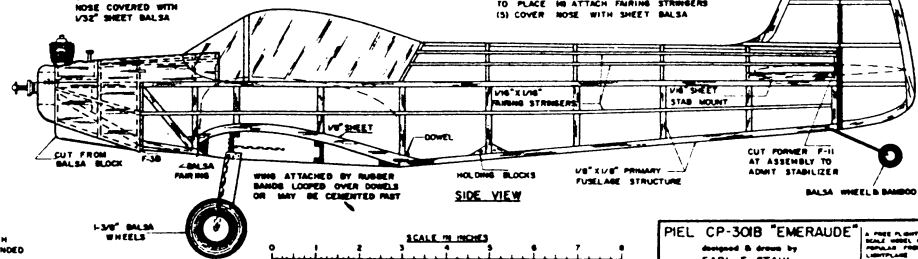
CANOPY FORMED BY
STRETCHING HEATED
030" ACETATE OVER
WOODEN FORM

FUSELAGE CONSTRUCTION: (1) BUILD 2
SIDE FRAMES (SHADED); (2) INVERT SIDE
FRAMES OVER TOP VIEW & JOIN WITH
CROSS MEMBERS; (3) CEMENT FORMERS
TO PLACE IN ATTACH FAIRING STRINGERS
(3) COVER NOSE WITH SHEET Balsa

TYPICAL TAIL RIB



SECTIONAL VIEW OF NOSE
SHOWING "PEE WEE" 030
ENGINE INSTALLATION

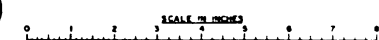


SIDE VIEW

FUSELAGE FORMERS 1/8" SHEET
Balsa EXCEPT AS NOTED

4-1/2" DIAMETER, 3" PITCH
PROPELLER IS RECOMMENDED

1-3/4" Balsa
WHEELS



PIEL CP-301B "EMERAUDE"
Designed & Drawn by
EARL F. STAHL

A FREE PLASTY PLUM
Balsa Model of a
Popular Pioneer
Lightplane